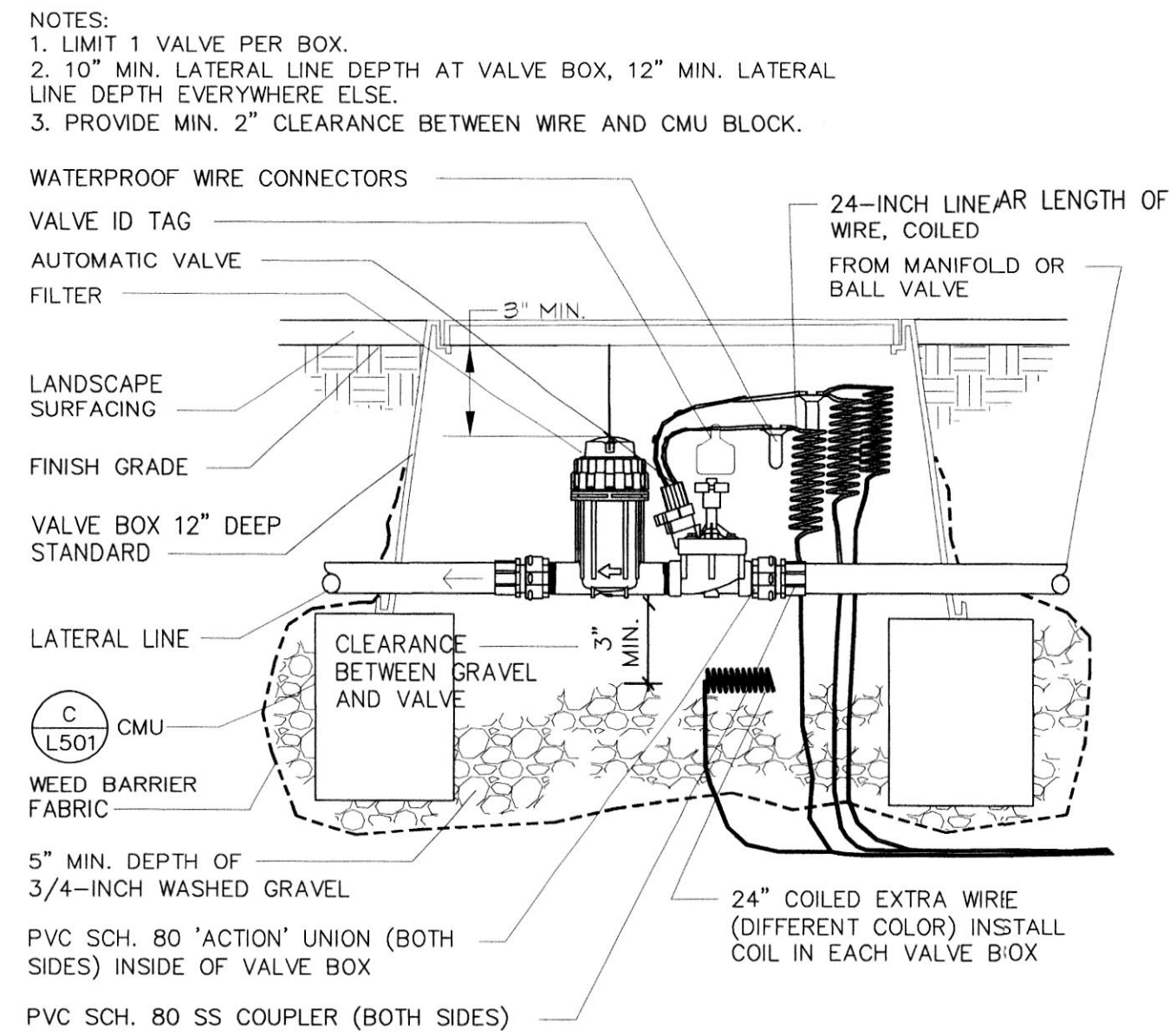
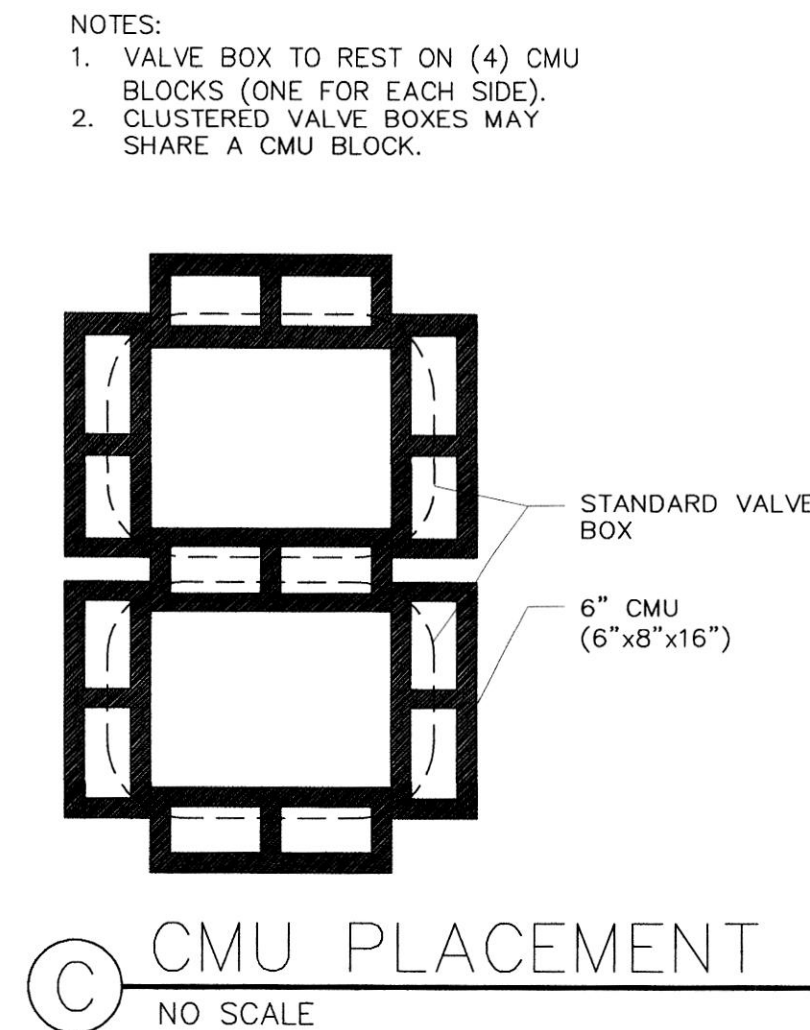


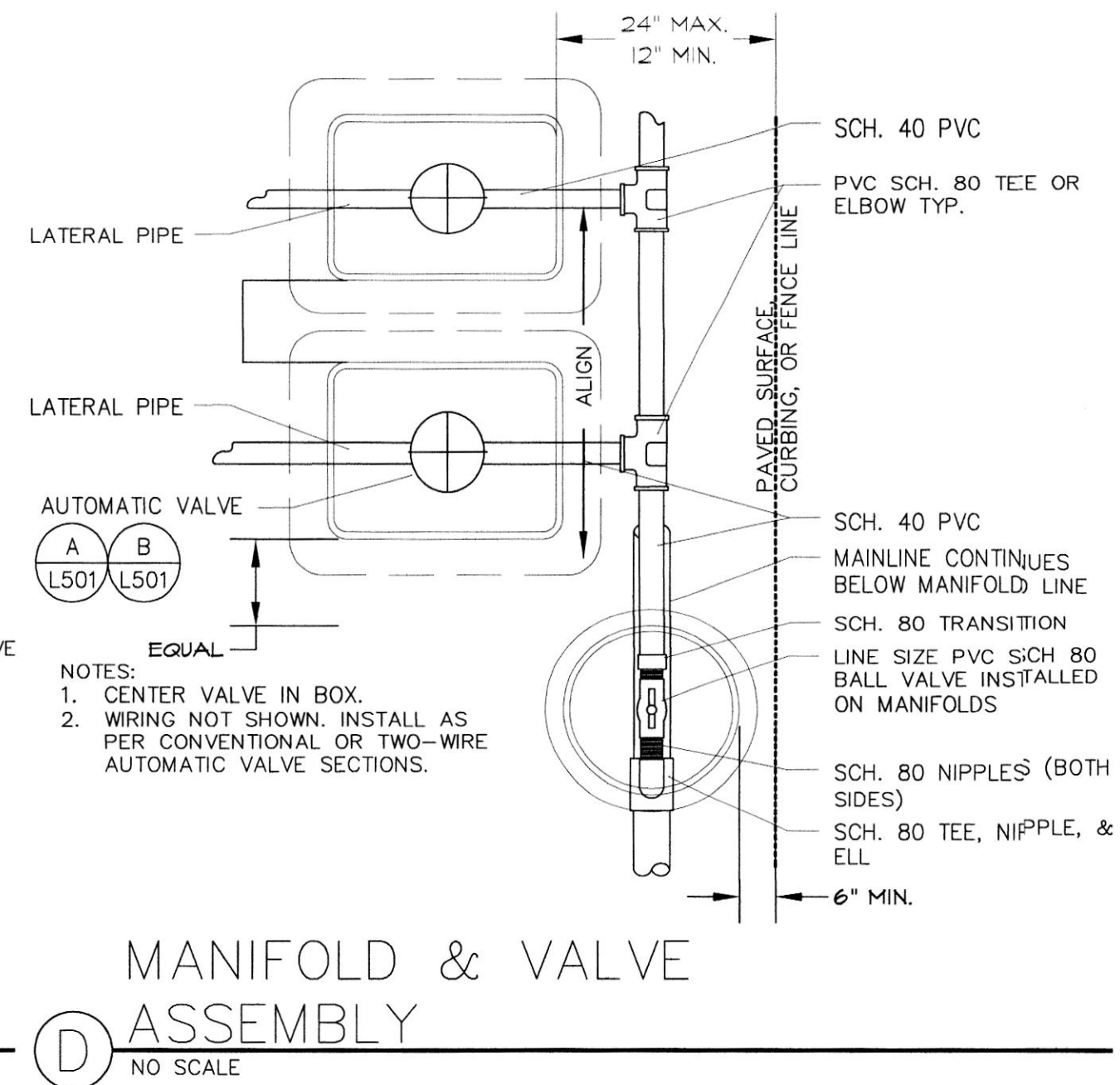
A AUTOMATIC VALVE WITH CONVENTIONAL WIRE SYSTEM
NO SCALE



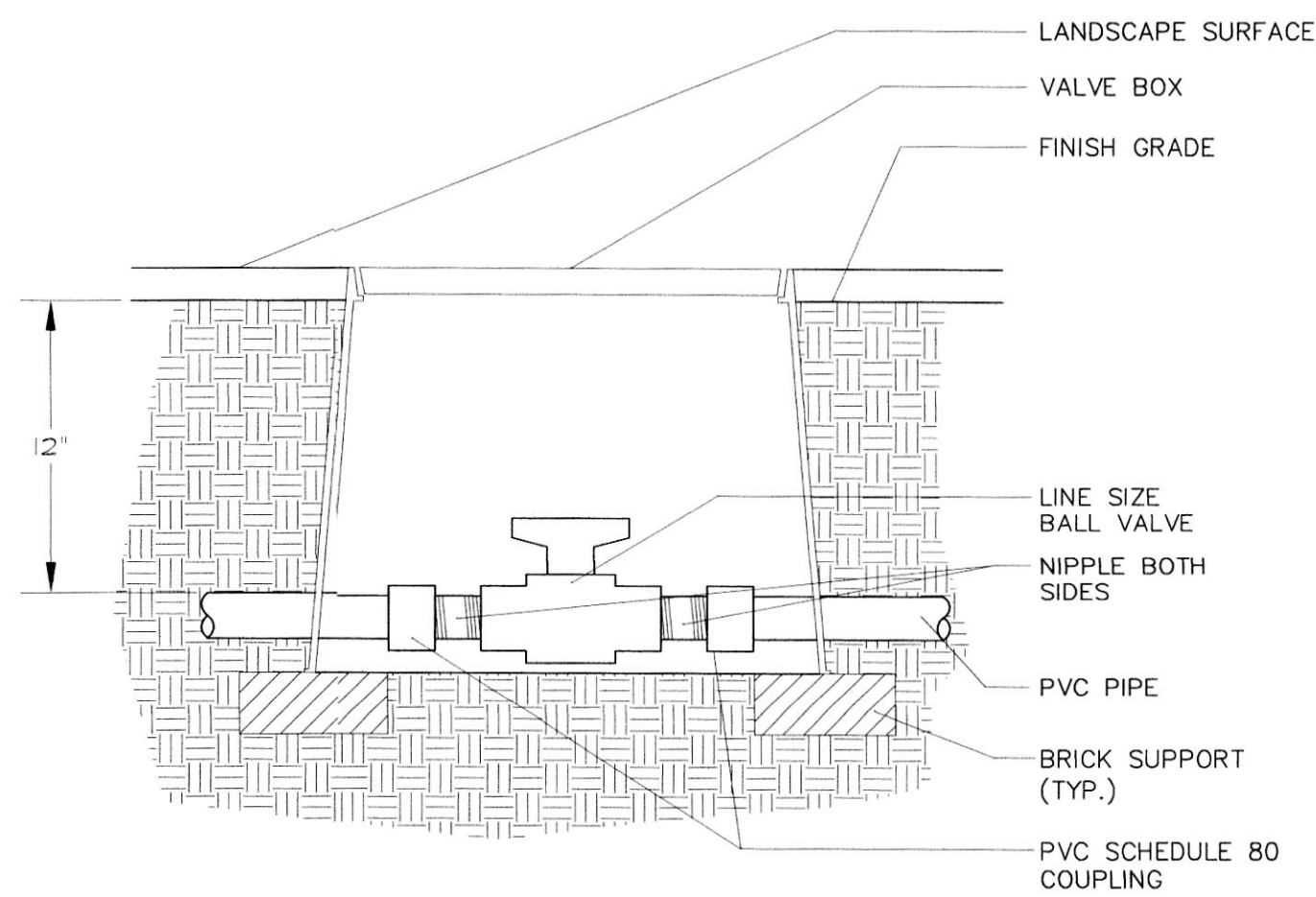
B DRIP VALVE ASSEMBLY-SECTION CONVENTIONAL WIRE SYSTEM
NO SCALE



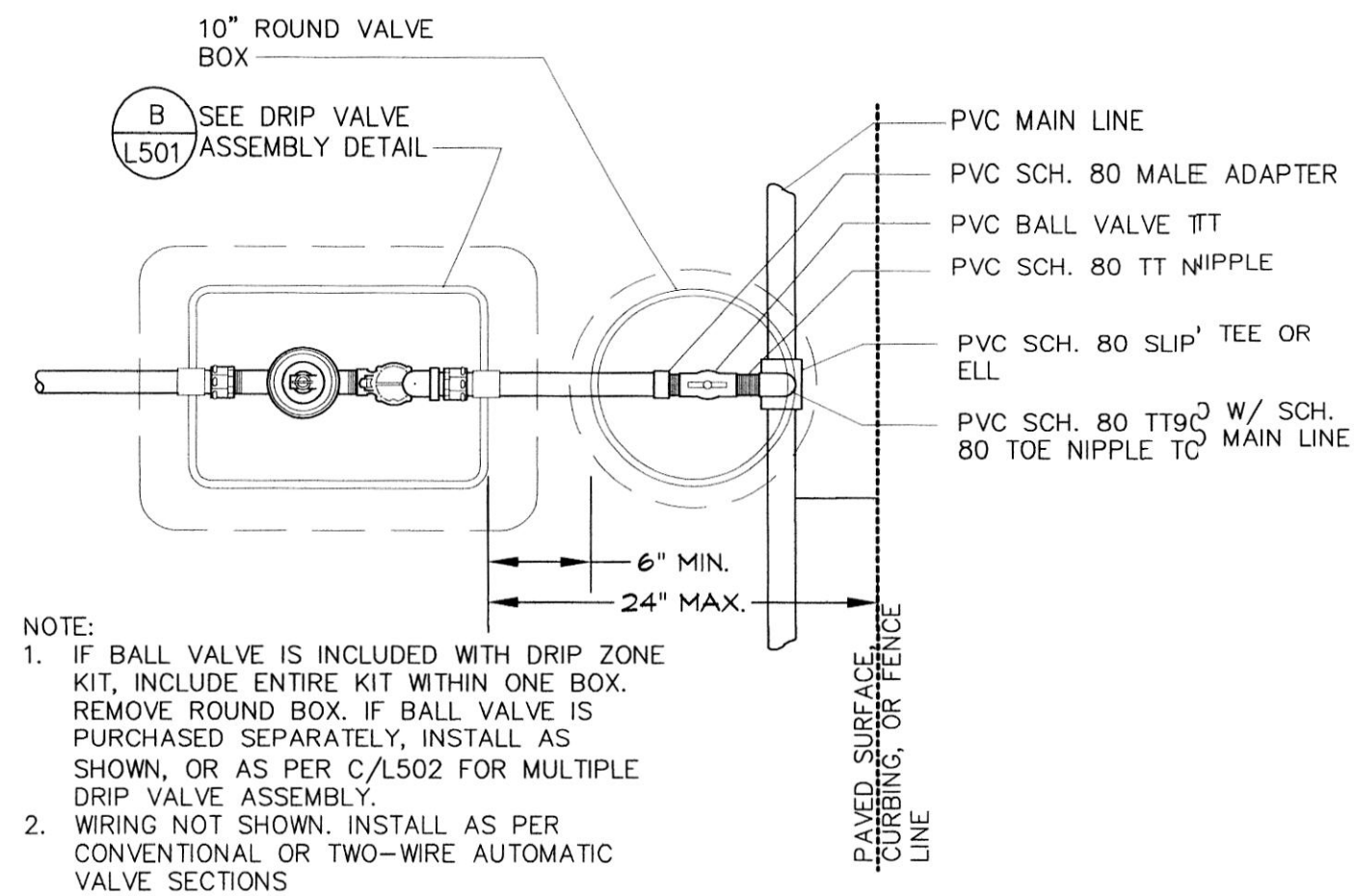
C CMU PLACEMENT
NO SCALE



D MANIFOLD & VALVE ASSEMBLY
NO SCALE



E ISOLATION VALVE
NO SCALE



F DRIP VALVE ASSEMBLY
NO SCALE

E. A. Lyman
Landscape Architecture
Land Planning
Urban Design
8188 South Highland Dr. D7
Sandy, Utah 84093
Telephone: 801.943.6564
Fax: 801.943.6526
E-mail: eric@ealyman.com

Architect / Engineer:
KNELL ARCHITECTS, P.C.
45 EAST 300 NORTH, PROVO, UTAH 84606
PHONE: (801) 377-4634 FAX: (801) 377-1061

Stamp:
STATE OF UTAH
Eric A. Lyman
88-103729
5301
LICENSED LANDSCAPE ARCHITECT
02/15/2022

SPANISH FORK 3
PARKING LOT EXPANSION
55 SOUTH 300 EAST
SPANISH FORK, UTAH

Project for:
THE CHURCH OF JESUS CHRIST OF LATTER-DAY SAINTS

Mark	Date (MM/YY)	Description

Project Number:
5050715
Plan Series:

Property Number:

Sheet Title:
IRRIGATION DETAILS

Sheet:
L501